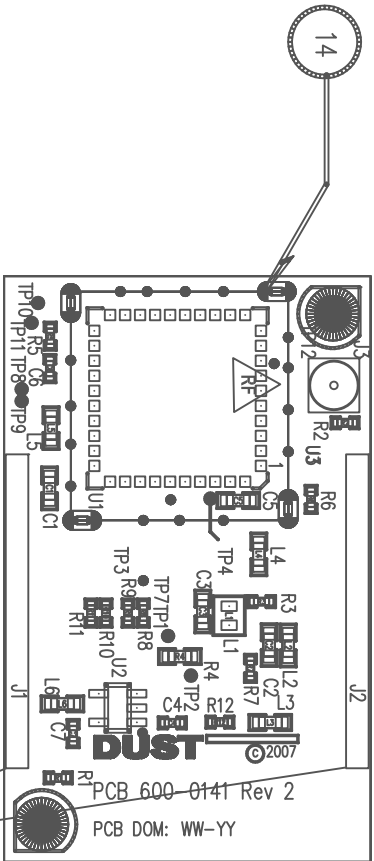


PROPRIETARY NOTICE:
THE INFORMATION CONTAINED ON THE DOCUMENT IS CONSIDERED TO BE
CONFIDENTIAL MATERIAL, PROPRIETARY TO DUST NETWORKS AND IS SOLELY
FOR THE INFORMATION PURPOSES ONLY. THIS INFORMATION SHALL NOT BE USED BY
ANYONE OTHER THAN DUST NETWORKS TO DESIGN OR CONSTRUCT ANY OF THE
ITEMS DEPICTED, NOR SHALL IT BE DISCLOSED, DUPLICATED OR COPIED FOR
ANY PURPOSE, NOR MAKE AVAILABLE TO ANY THIRD PARTY WITHOUT THE
WRITTEN CONSENT OF A DUST NETWORKS OFFICER.



TOP SIDE PARTS LEGEND, SILK SCREEN

NOTES (UNLESS OTHERWISE SPECIFIED):

1. ASSEMBLE AND INSPECT IN ACCORDANCE WITH IPC - A - 610 - D.
2. ASSEMBLE WITH ROHS 6 PROCESS
3. WATCH FOR POLARITY OR ORIENTATION MARKINGS ON THE FOLLOWING COMPONENTS: U1, U2
4. THE FOLLOWING COMPONENTS CAN BE POPULATED IN EITHER ORIENTATION:
ALL RESISTORS, INDUCTORS AND NON-POLARIZED CAPACITORS.
5. INSTALL J1 AND J2 ON BACKSIDE OF THE BOARD. DO NOT INSTALL PIN 3 ON J1 AND J2.
6. SQUARE PAD DENOTES PIN ONE OF CONNECTORS AND HEADERS.
7. INSTALL RF SHIELD 440-0041 ON TOPSIDE. ORIENT RF TRIANGLE AS SHOWN ON DRAWING. SOLDER THE PINS FROM THE BACKSIDE OF THE BOARD USING NO-CLEAN FLUX. CLEAN RESIDUE FROM SOLDERED AREA.
8. COMPLETED ASSEMBLY TO BE PACKAGED IN ANTI-STATIC PACKAGING THAT WILL PROTECT FROM DAMAGE AND DETERIORATION.
9. IF REQUIRED, CONFORMAL COAT AND POT ASSEMBLY IN ACCORDANCE WITH DUST DOC# 052-0048.

		UNLESS OTHERWISE SPECIFIED, DIMENSIONS ARE IN INCHES.	
		TOLERANCES ARE: FRACTIONS: DECIMALS: ANGLES: 0° 30' .XXX ± .005	
SEE ARENA		MATERIAL - SEE NOTES.	
NEXT ASSY		FINISH - SEE NOTES.	
APPLICATION		DO NOT SCALE DRAWING	
		APPROVALS	DATE
		DRAWN BY: scosuga	06-18-09
		CHECKED	
		ENGRG	
		ISSUED	
		CONTRACT NO.	
		SCALE: NONE	
		SHEET 1 OF 1	

TITLE:		DUST NETWORKS	
PCA ASSY DWG			
SIP MOTE CARRIER, RHINE, ROHS6			
FSQM NO.		DWG NO.	
B		705-0164	
		REV.	
		1	